



Industrial Services Division

Plants & Turnaround

Manufacturing & Production



Chemical Solution

Flare & Chimney

Scaffolding Services

Onsite Maintenance

END
TO
END
SOL
UTI
ONS

 info@anabeeb.com
 www.anabeeb.com

Our targets are to meet the safety, quality and schedule; the three keys of success to our valuable client.

Our Mission

Create value to the client while achieving sustainable returns

For more than 40 years we have been bringing the latest technologies and techniques to support the oil & gas and petrochemical industries, undertaking manufacturing & fabrication aspects, total turnaround and to provide pre-shutdown solutions such as industrial planning services from concept to close out. From this, ANABEEB developed the total end-to-end solution (E2ES) for industrial maintenance and services

To outline ANABEEB's main business units, we have:

- Industrial Services Division
- Pipeline Services Division

Industrial Services Business Units;

- Plants Turnaround Unit
- Manufacturing & Production Unit
- Chemical Solutions Unit
- Flare & Chimney Unit
- Scaffolding Services Unit
- On-site Maintenance Unit

ANABEEB possesses one of the largest pool of quality resources in the Middle East with the most experience. Our targets are to meet safety standards, provide high quality and schedule; the three keys of success to our valuable client

ANABEEB Statistics:



Safe Man-Hours



Total Projects



Turnarounds



Total Manpower



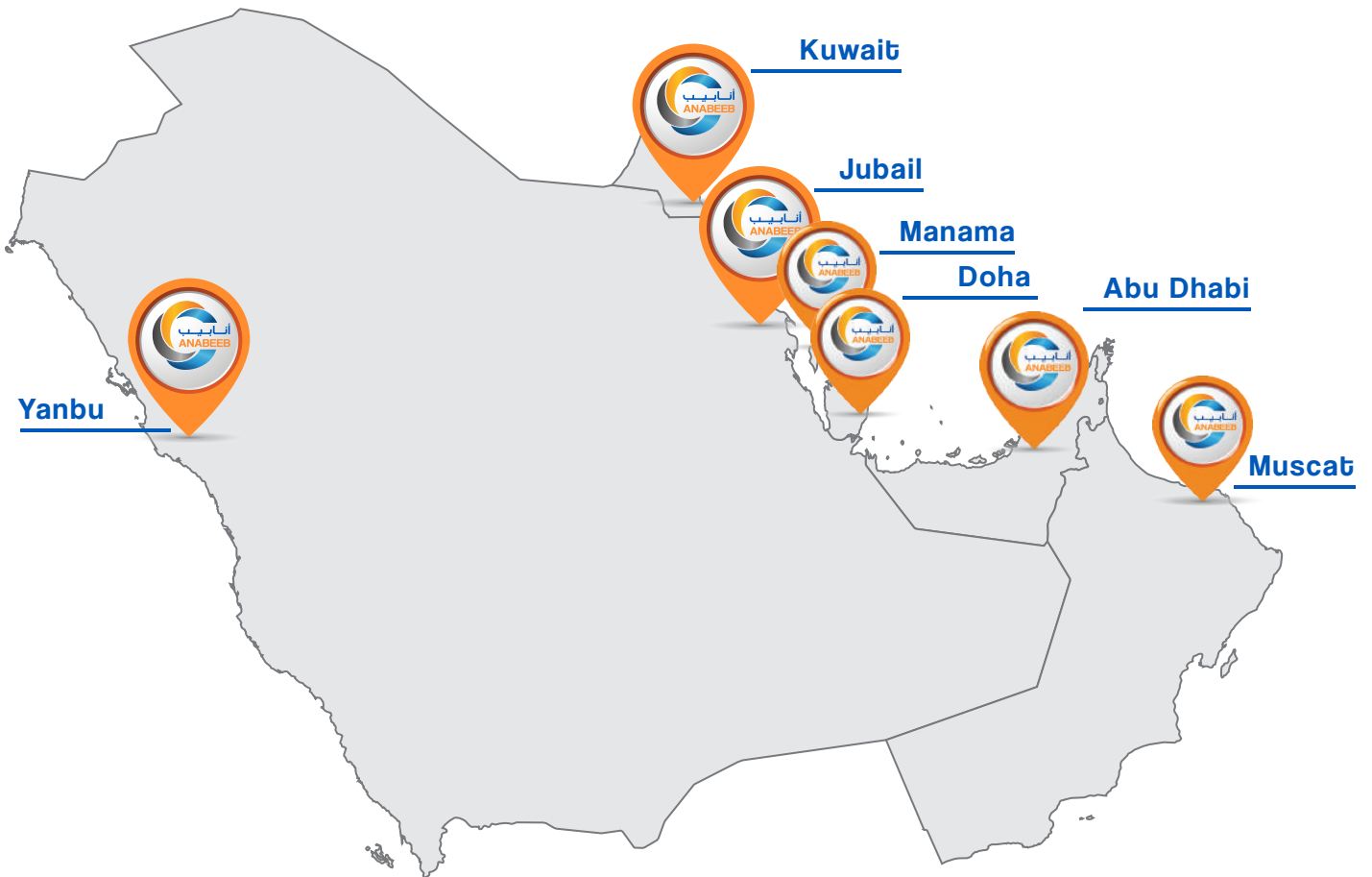
IKTVA - ARAMCO



Local Content - Sabic

Arabian Pipeline & Services Co. Ltd. (ANABEEB)

Industrial Services Division



Saudi Arabia | Bahrain | Qatar | United Arab Emirates | Oman | Kuwait

Technical Partners



Catalyst Loading & Unloading



Dense Loading



Differential Pressure (DP) Technology



Decontamination



Chemical Cleaning



Hot Tapping and Line Stopples



NDT Services



Industrial Demolition



Al Osais



SERVICES PORTFOLIO

- Turnaround Planning & Management
- LSTK Turnaround Execution
- Permanent On-site Maintenance (Routine Maintenance)
- Turnkey Brownfield Construction works (Mechanical Discipline)
- Catalyst Handling
- Reactor Cool Down
- H.P. Water Jetting
- Industrial Vacuuming
- Chemical Cleaning
- Pre-commissioning Support
- Decontamination
- Decoking & Pipeline Scraping
- Dry Ice Blasting
- Furnace Tube Inspection
- Nitrogen Services
- Fabrication & Repair (In-shop)
- Flange Integrity (Bolt Torqueing & Tensioning)
- Tank Cleaning, Maintenance & Inspection
- De-sludging
- 3D Nozzle Tank Cleaning
- Sandblasting & Painting
- Scaffolding
- Guy wire Inspection / Lubrication
- Online Fin Fan Cleaning
- Shop Fabrication, Structural steel, Piping & Repair works
- Furnace & Reformer Revamp
- Heat Exchanger & Reactor Tube
- Inspection (Eddy Current)
- Helium Leak Detection
- On-site Machining
- On-site Metal Disintegration (spark erosion)
- Hot Tapping & Cold Tapping
- Line Stoppling
- On-line Leak Sealing
- Heat Exchanger Tube Expansion
- Pneumatic Pressure Testing
- Heat Exchanger Re-tubing (on-site and off-site)
- Heat Exchanger, tubes, expansion, testing and Plugging
- Pipeline Tunneling
- Pipeline Laying by Trench Less Technology (HDD & Micro Tunneling)
- Industrial Planning Services
- Online PSV Calibration
- Valve testing & overhaul
- Vessels Manufacture
- Heat Exchanger manufacture
- Modular Skid manufacture
- Flare & Chimney Services
- Rope Access
- Plant Equipment Dismantle & Installation
- Plant Modification & Revamps



Table of Contents



Plants Turnaround Unit

Turnaround, Shutdown	8
HP Water Jetting	9
Catalyst Handling & Reactor	11
Mechanical Services	12
Furnace & Reformer Revamp	13
On-Site Metal Disintegration	14
Re-tubing	15
Torquing & Tensioning	16
On-Site Machining	17
Valve Overhaul & Testing	18



Scaffolding Unit

Scaffolding Services	20
----------------------	----



Chemical Solutions Unit

Chemical Cleaning & Pre-commissioning	24
Steam Blowing	25
Decontamination	26
Fin Fan Cleaning	27
Ultrasonic Cleaning	29



Flare & Chimney Unit

Flare, Chimney & Rope Access	30
------------------------------	----



Manufacturing & Production Unit

Manufacturing	32
Machine Shop	35
Flare and Chimney Manufacturing	36
Modular Skid and Heat Exchanger	37
Leak Sealing	38



On-site Maintenance Services

Plant Support	40
---------------	----



Pipeline Division

Pipeline Construction	42
Thrust Boring Equipment	45

ANABEEB is the leading industrial services provider since 1983. Our focus is to provide value relationship to our clients and foster trust, especially in this challenging market.

ANABEEB is committed to the health and safety of its employees. We meet all relevant Health and Safety Regulations.

Our HSE department oversees our OHSAS system and supports line managers in enforcing its application. They also implement safe systems of work such as Risk Assessments, Job Safety Analyses, HSE Plans and Safety Procedures. We have regular training programs for our staff members and frequently recognize our employees by conducting safety campaigns.







Plants Turnaround Unit

In 1983, ANABEEB began offering HP Water Jetting, Industrial Vacuuming & Catalyst Handling.

From this, we developed what is now commonly referred to as the 'end-to-end solutions' for plant maintenance, relieving operators from the hassle of coordinating and invoicing multiple contractors, thus enabling them to focus on their core business.

Today, we are again leading the way by forming specialised divisions with dedicated in-house equipment and manpower to ensure our clients receive the best support available.

Our Roots, Our Success,
Industrial Services.

- ANABEEB

Source: ANABEEB Photo Library
(HP Water Jetting, Industrial Vacuuming,
Leak Repair & Catalyst Handling at ANABEEB, Jubail Yard)



Turnaround Execution, Management & Planning

- We carry-out major project activities on: Reactors, Heat Exchangers, Tanks, Columns, Furnaces, Static Equipment and other Plant Critical Equipment
- We are a well established partner in large Lump Sum Turn Key (LSTK) projects
- We are a single source supplier for small, medium and large scale shutdowns, ranging from 200 - 3000+ manpower on any single event
- We are “end-to-end solutions” provider for plant turnarounds, and on-site maintenance needs
- Our Project Teams are hand-picked to custom-fit your needs, enabling more efficient mobilization and on-time execution
- With vast amounts of equipment and experienced multi-disciplinary teams in-house, we work 24/7 to complete a turnaround with minimum downtime, within budget, and without incidents



END-TO-END SOLUTIONS



Source: ANABEEB Photo Library
(Turnaround & on-site maintenance services at client site)



High Pressure Water Jetting

ANABEEB applies manual and automated water jetting systems, exercising techniques to safely remove the unwanted deposits from process vessels, tanks and lines.

ANABEEB is a member of the Water Jetting Association and our training, procedures and techniques are at the forefront of the industry.



Automated Water Jetting

These systems are the most effective method to clean the tubes of heat exchanger bundles and fin fan banks. We use 3-D water-jet technology to remove tough deposits such as coke and polymer from tanks and process vessels.

Our Equipment:

- Lancing Machine
- Inside Bundle Cleaner
- Lance Tube Cleaner
- Outside Bundle Cleaner
- Triple Lance Tube Cleaner

We also do:

- Line Cleaning
- LP, HP & UHP Jetting

Source: ANABEEB Photo Library
(High pressure water jetting at ANABEEB, Jubail 2 Training Yard)



Catalyst Handling Services

- Unloading and loading of single and multi-bed reactors under inert or normal atmospheres
- Vacuum unloading with closed loop nitrogen recirculation
- Using dense loading technology under license
- All type of Catalyst screening under normal atmospheres

Life Support System – Model 5000

The system is recognized as Personal Protective Equipment pursuant to the guidelines of the European member states (89/686/EWG), certified with the CE-Symbol and certified by United States NIOSH (TC-13F-360), National Institute for Occupational Safety and Health.



Loading of Catalyst



Reactor

- Pre-commissioning of reactors and vessels
- Reactor blinding and spading, bolt tensioning and welding
- Clearing of coked / fused reactors
- Removal and reinstatement of reactor internals
- Video inspection of reactor under nitrogen and normal atmospheres
- Reactor passivation
- Soda ash cleaning
- Reactor repair, modification, and upgrade

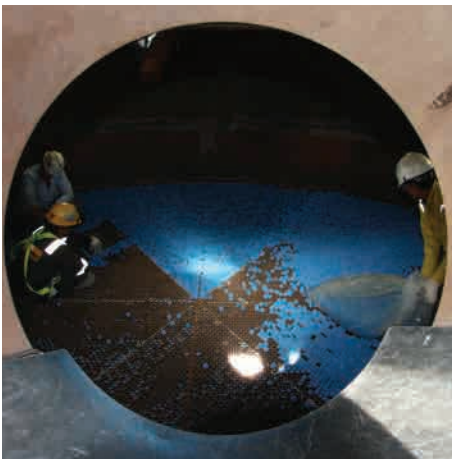
Unloading of Catalyst





Tubular & Reformer

By utilizing a combination of local resources and the latest methods and equipment from our technical alliance, we complete tubular projects with minimal downtime and the highest safety and quality standards.



Tubular Reactor

- Vacuum unloading
- Gravity unloading (fish taping)
- Borescope inspection
- Reactor tube grit blasting
- Reactor tube swab cleaning
- Eddy current tube inspection
- Template loading
- G6 and MIDC machine loading
- DP testing, MET 501
- Tube plugging
- Automatic swab line blowing
- Laser DP testing
- Sleeve rolling
- Climate control



Primary Reformer

- Air lance vacuum unloading
- Borescope inspection
- Eddy current and laser inspection
- Uniloader catalyst loading
- Unidense catalyst loading
- ΔP testing
- Unclean external tube cleaning
- Unidense in-tube internal tube cleaning
- Tube, header and pigtail replacement

ANABEEB has developed a comprehensive range of pre-shutdown, post-shutdown and maintenance services for tubular reactors and primary reformers.

We have many years of experience in all types of reactors, including:

- CCR's
- Hydrocrackers
- EO/EG
- Primary Reformers
- Catofin
- HTS & LTS
- HDS
- Methanators
- Mole Sieves
- Ammonia Convertor
- Driers
- Pyrex
- Hydrocracker
- FCCAI
- Alkylation
- Hydrotreaters
- Sulphuric Acid



ANABEEB has developed a strong mechanical engineering division to support your operations with maintenance, overhauls, upgrades, repairs and installation works on all types of stationary equipment.

All welders are tested and qualified by independent third parties to a 6G standard.
In-house training facility for welders and fabricators.



Stationary Equipment Revamp

Revamping is making modifications to an existing industrial plant, to improve features and increase the overall capacity, usually by replacing items of equipment that limits the flow rates (debottlenecking).

- Replacement of stationary equipment internals and strip lining.
- Modification of stationary equipment as per inspection recommendations.
- Replacement of furnace and heater tubes.
- Replacement of reformer tubes, headers and pigtails.

Plant Changes & Modifications

- Fabrication, erection and replacement of piping and steel structures, including associated painting and insulation works.
- Erection and replacement of stationary equipment, including associated painting, insulation, and minor civil and electrical works.



Our core strength is that we offer a complete solution for these types of equipment and can successfully complete LSTK jobs.

Tube and fire-side cleaning, inspection and mechanical works - all under a single scope.

Our skilled and experienced fitters, fabricators, welders and technicians carry out the following services:

- Complete/partial replacement of convection and/or radiant furnace tubes.
- Reformer header, tube, and pigtail replacement.
- Refractory and insulation works (through subcontractor).
- Extraction of furnace tubes with specialized tube-puller drastically reduces duration.
- Furnace tube extraction with tube puller (reduces duration).
- Supply of tubes.





On-Site Metal Disintegration

The fastest and safest way to remove broken or seized bolts and studs from equipment without damaging the hole and thread.

- 4-5 times faster than conventional machining
- Our specialized system is designed for quick, accurate and portable on-site disintegration
- We can handle bolts of virtually any size, shape and grade

Process Overview

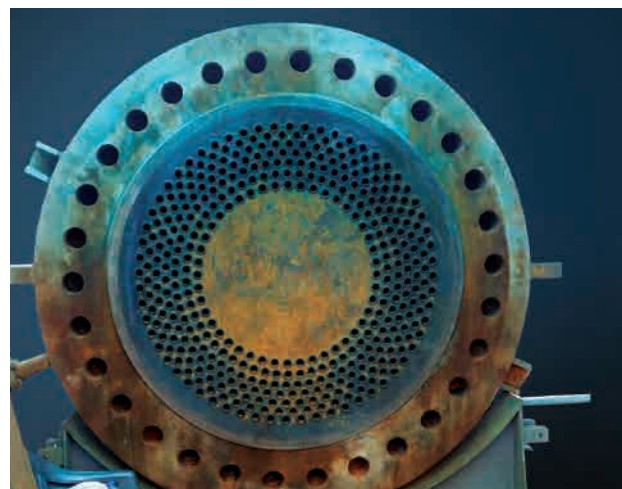


How Does It Work?

Process involves a vibrating electrode that strikes a high-frequency electric arc each time it touches the target.



Before



After



ANABEEB can re-tube all types of heat exchangers.



Complete Bundle Re-tubing

Heat exchanger bundles can be re-tubed 3 - 4 times, and by re-using the tube sheet and baffle plates, that translates into huge costs savings when compared to buying a brand new bundle.



Heat Exchanger Repair

- Tube-to-Tube Tester: Pneumatic leak detection of a 0.75" to 1.25" tube in less than 60 seconds
- Pop-a-Plug: Rapid plugging of tubes with no welding or hammering, yet is 10x faster
- Tube Expansion: Rapid repair of tube-to-tube sheet leaks
- Tube Extraction: On-site removal of tubes for re-tubing or inspection
- Complete Re-tubing: On-site re-tubing of all shell & tube HE's (horizontal and vertical)
- Minor Repairs: Tube sheet repairs, adjustment of baffles, sealing strip replacement, welding strips and rods



Torquing & Tensioning

Our teams of highly trained and experienced technicians safely ensure leak free bolted connections.

- Cleaning of Bolts / Replace damage bolts
- Nut Splitter
- Torque Wrench
- Bolt Tightening Methods
Tension: 1 1/8" - 4 1/2"
Torquing: 1/2" - 3 3/4"
- Joint Integrity
- Flange Spreading
- Using Correct Tension Tool
- Proper Alignment of Flange / Gasket / Bolts
- Inspection of Flange Facer



Source: ANABEEB Photo Library
(Torquing & tensioning services at client site)



On-Site Machining

Our team are trained and experienced technicians to safely ensure leak free connections.

With its comprehensive on-site machining capability, ANABEEB can carry out repairs and modifications on your plant flanges, on-site, saving you time and money!

Hot Tapping & Line Stop

ANABEEB Hot Tapping & Line Stopping services help to prevent unwanted shutdowns & turnaround to keep critical piping and pipeline systems online during repairs and routine maintenance.

Using special pneumatic and hydraulic mobile equipment, our skilled Technicians are able to finish fast and safely.



Cold Cutting

- Pipe cold cutters with split frame technology for endless pipes
- Quick and safe clamping and adjustment for pipeline welding
- Rigid pipe cold cutter for pipeline welding
- Cutting of heavy duty pipes by use of two cutters
- Simultaneously cut and bevel of heavy wall pipes
- Simultaneously bevel both pipe ends
- Cold Cutting: 2" - 48"
- In-situ (Flange Facing) 2" - 118"

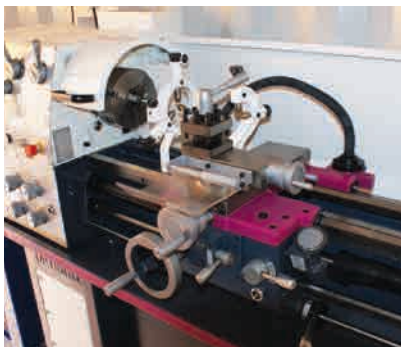
Source: ANABEEB Photo Library
(Leak Sealing, Line Stop & Cold at Cutting at ANABEEB workshop & Client Site)



Valve Overhaul & Online PSV Testing

Overhaul Container

- Overhaul of Shut-Off, Safety and Control Valves
- Off-line service suitable for plant Turnarounds & Shutdowns
- Suitable for all Valves, all Metallurgies
- Parts can be sandblasted
- Certified according to DNV 2.7 / EN 12079 / NORSOK



Testing Container

- Dedicated Valve Technicians
- Testing Valves On-site or In-shop, 24/7
- Suitable for all Valves, all Metallurgies
- Off-line service suitable for plant Turnarounds & Shutdowns

Valve Division with Trained Skilled Technicians

- Online PSV tests on any site and location, 24/7
- Fully automated system controlled by laptop
- Suitable for gas, steam, condensate and water
- Detailed reporting with complete data records

Key Benefits

- NO need to dismantle the valve
- NO plant shutdown
- NO productivity loss
- NO profitability loss





Scaffolding

In 2018, ANABEEB began scaffolding services

Safety, speed and flexibility are at the core of Anabeeb of Scaffolding services.



Scaffolding

Our scaffold team is ready for a swift and safe execution

ANABEEB will provide advance quality scaffolding adhering to all safety procedures and our team is prepared to execute diverse projects, regardless of location at any time.

We are committed to ensure that the scaffold will be built most effectively, taking into account the

structure and the different trades that will be impacted by the scaffold's construction.

As a leading industrial services provider, we are capable of handling all stages of projects from pre-shutdown to post-shutdown activities.



- Bolt free wedge head connection technology
- All-around scaffolding
- Layher system
- Ease and speed of installation optimizes usage and often fulfills short notice, ad-hoc needs

Source: ANABEEB Photo Library
(ANABEEB Scaffolding at Jubail 2)



ANABEEB has a Quality Management System (QMS) consisting of policy statements, operational procedures, and work instructions that are following the ISO standard.





Chemical Solutions Unit

In 1994, ANABEEB established Chemical Cleaning Services

Our chemical engineers employ a variety of techniques for both pre-operational and post-operational cleaning of stationary and rotating industrial plant equipment.

*Source: ANABEEB Photo Library
(HP Water Jetting, Industrial Vacuuming,
Leak Repair & Catalyst Handling at ANABEEB, Jubail Yard)*



Specialized Cleaning Services

We offer a broad range of Specialized Cleaning Services for Pre-Commissioning and Post-Operational/Maintenance of plants and systems.



- Chemical Cleaning (Ultrasonic Cleaning, Circulation, Soaking, Slug Pigging & Yo-Yo Method)
- Steam Blowing, Air Blowing Lube Oil Flushing & Nitrogen Purging
- Filtration Process & Cooling Water System Passivation
- Storage Tanks, Process Vessel Cleaning using 3D & Gamma Jet Technology
- Online Chemical Cleaning of Heat Exchanger & Furnace
- Pipeline Pigging/Scrapping & Pressure Testing
- Decontamination
- Fin Fan Cleaning including A-Frame Mode (Dry & Wet Method Technology)
- Hydro Milling
- Environmental Services

Source: ANABEEB Photo Library
(Chemical cleaning at client site)



Steam Blowing

We optimize our steam blows with quality engineering, and by utilizing the best equipment.

Steam blowing is carried out essentially for steam circuits (i.e. for steam generating boilers, steam heated exchangers, steam turbine upstream piping or other steam lines).

The principle behind blowing steam to clean the lines is that the thermal cycling (heating/cooling) and high velocity gas flowing through the line will “shock” the pipe to break the mill scale, weld slag, construction debris, sand, oil, dust, away from the pipe wall.



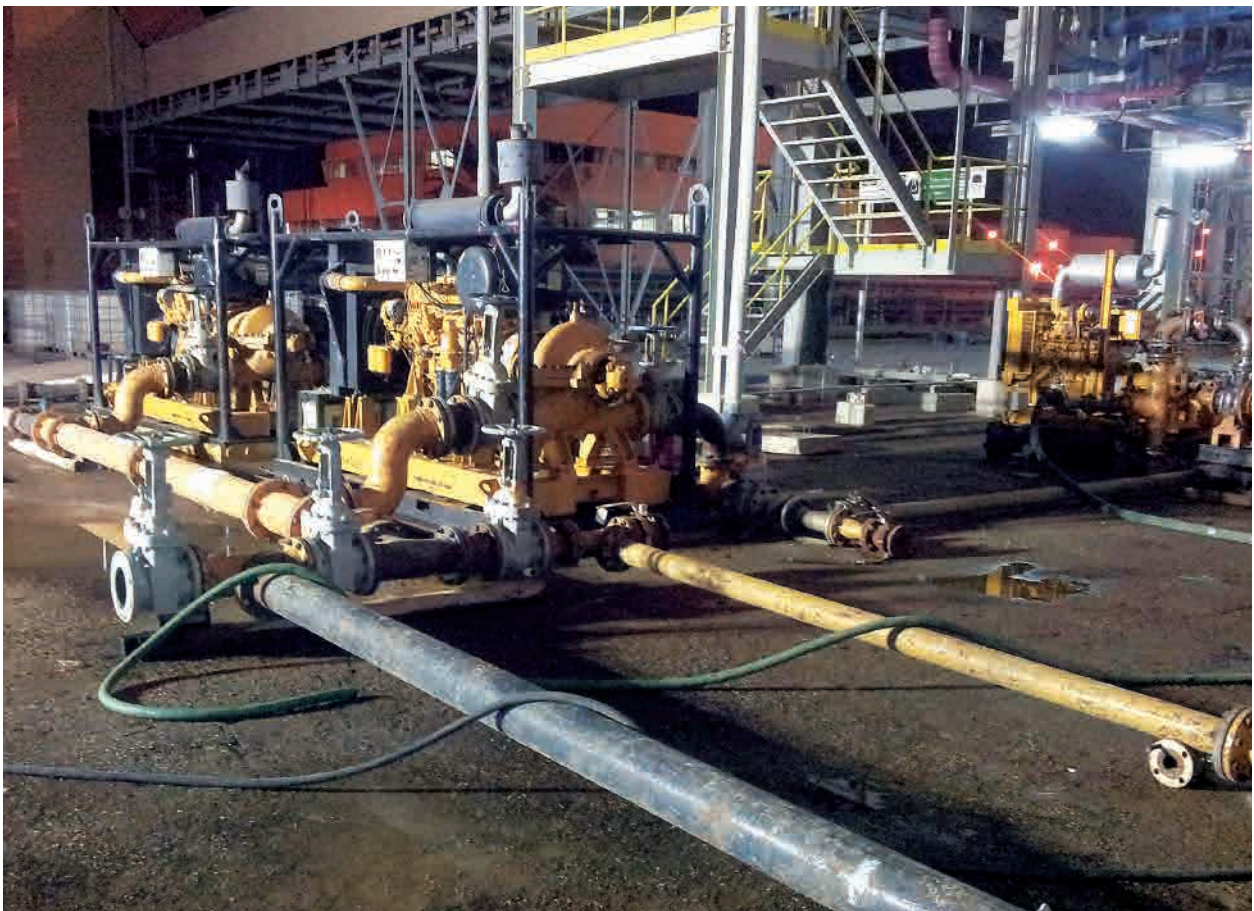
We can supply turnkey steam blow projects, steam blowing or air blowing design, on-site steam blowing or air blowing management & supervision, and equipment hire.

*Source: ANABEEB Photo Library
(Chemical cleaning at client site)*



Our chemical cleaning processes let the chemistry take the lead, reducing human touch with the equipment during the cleaning process.

Decontamination services for refineries and petrochemical plants making manpower safe for carrying out required repair/maintenance jobs. We observe removal of hydrocarbons and achieving parameters such as H₂S = 0 ppm, LEL = 0, pyrophoric material = NIL and hydrocarbons less than 5 ppm.



Key benefits of effective and efficient decontamination include:

- Maintenance costs and down time
- Waste generation and discharge cost
- Steam consumption and out time
- Pre-maintenance work by up to 50%
- Mechanical cleaning time

*Source: ANABEEB Photo Library
(Chemical cleaning at client site)*



Cleaning Systems

As a result of many years of extensive use and contamination, cooling systems can lose capacity. This results in a loss of productivity. With the help of our cleaning systems we can ensure that your cooling systems will once again function as they were designed to do.

- Improvements up to 35%
- Longer life
- Lower maintenance costs
- Safer than traditional cleaning method
- Environmentally friendly
- No high costs to set up scaffolding
- Zero waste accumulation

Water System for Forced Draft



Dry System for Induced Draft



Dry Ice Blasting

Key Benefits

- Effective cleaning without water and chemicals
- Increasing uptime through in-situ cleaning
- Cleaning without damaging the substrate
- Often no need for disassembly or cool down
- Eliminating the hazardous solvents
- No residue left after cleaning
- Safe to use on electrical components

Other Applications

- Ethylene furnace
- Polyethylene reactors
- Glycol reactor
- Dryers

Excellent Alternative to

- Solvents
- HP Jetting
- Mechanical Cleaning
- Steam Cleaning



Boilers



Switchboards



Turbine



Motors



Ultrasonic Cleaning

The submersion technology allow sound wave to reach and remove the contamination

Ultrasonic cleaning method through which one can remove heavy contaminants from production/process equipment (Exchanger, Column, Demister, Valves, Pipe Spools, Filters etc.).

- Excellent alternative to HP jetting; more safe, less water use and faster
- Clean any heavy duty item, such as heat exchangers, valves, filters
- Capable of removing oil and dirt build-up as well as hardened coke
- Soak solution customized depending on equipment type, degree of fouling



Before



After

Key Benefits

- Longer production runs due to improved heat transfer
- Reduces cleaning time so shortens turnaround schedule
- No need to dismantle complex equipment as cleans hard-to-reach places
- Does not damage equipment being cleaned
- Easier clean-up as waste water contained inside vessel
- Cleaning solution can be re-used
- Fewer operators required
- Less HP jetting so less personal risk



Flare & Chimney Unit

In 2007, A dedicated unit with a comprehensive portfolio of flare and chimney services, many of which can be performed via rope access thereby saving expense of cranes and scaffolding.

*Source: ANABEEB Photo Library
(Flare & Chimney Services, Client Site)*



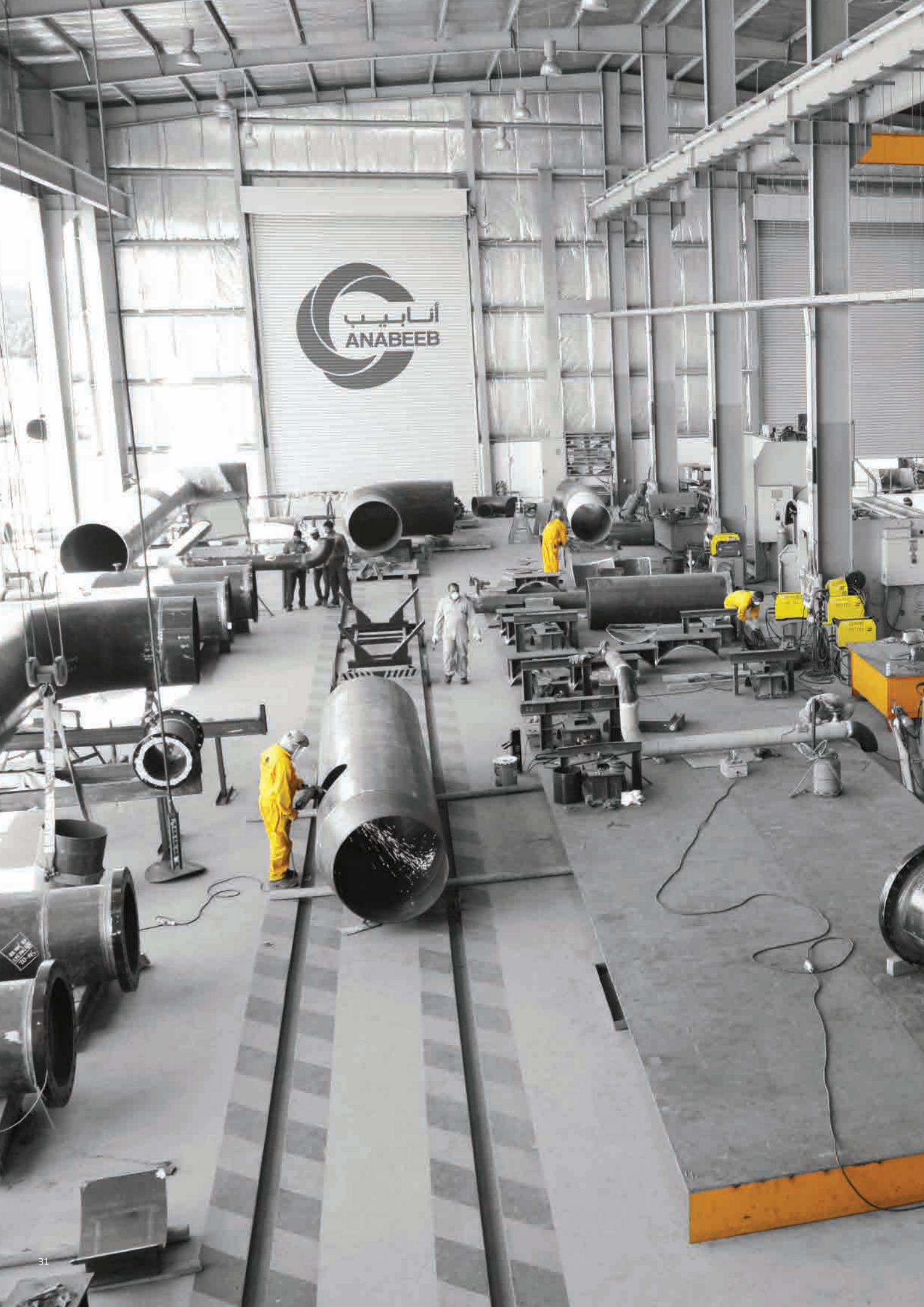
Flare, Chimney & Rope Access

Your all-in-one maintenance partner for every flare type and size used in onshore and offshore industry.

- Inspection, maintenance, upgrading, replacement and repairs of virtually every flare type and size used in onshore and offshore industry.
- Flare Tip Handling System - Modular A-frame for services without use of crane.
- Projects feasibility including FEA (Finite Element Analysis) and 3D proposals.
- Pilot burners, HEI igniters, thermocouples, flame front generators, AWW systems (Aircraft Warning Lights).
- Guy wire maintenance, replacement, lubrication, tension verification and MFL (Magnetic Flux Leakage) inspection.
- IRATA certified personnel for rope access activities.
- Alimak.
- Sandblasting and Painting.



Source: ANABEEB Photo Library
(Heavy lifting, rope access & flare inspection at client site)







Manufacturing & Production Unit

Piping & Construction Unit

In 2013, ANABEEB understood the needs of the client, supporting localization in the Kingdom.

Our 3,400 sqm of Carbon Steel and Stainless Steel workshops are equipped with latest technologies and all of our welders receive in-house training and independently qualified to 6G standard and processes.



Source: ANABEEB Photo Library
(Manufacturing, CNC machine & plasma cutting at ANABEEB, Jubail 2 workshop)



Vessel and Pressure Vessel

We are an approved pressure vessel manufacturer with extensive experience in fabricating and delivering custom ASME certified pressure vessels, regardless of specification and design requirements.

Our quality control system ensures that your final product has been properly constructed, inspected and hydrostatic pressure tested.



Fabrication capabilities include:

- Stainless and carbon steel piping and structure
- Mechanical assembly
- Instrumentation and valve installation
- Painting & sandblasting
- Pipe fitting, bending and installation
- Sheet metal
- Modification
- Repairs
- Structural fabrication
- Flare Tip
- Flare Stack
- Pilot Burner



Welding

We have some of the best welding staff in the business executing wide variety of projects involving different metallurgies including inconel, exotic metals and different kinds of methods.

Source: ANABEEB Photo Library
(top photos: Manufacturing team building vessel at client site
bottom left photo: Carbon steel pipes manufactured at client site)



Machine Shop

Our capacity includes a full service machine shop. Our talented operators and machinists run a variety of manual and automatic machines allowing us to take on a wide selection of tasks, with a capacity maximum size of 56”.



Turning, Milling, Online Boring, Drilling, Honing, Grinding, Lapping, and Cutting Keyways



Repair & Modification

- Modification of stationary equipment
- Fabrication of replacement piping and steel structures

State-of-the-Art Workshops

- 3400 sqm of C/S and S/S workshops are equipped with the latest technologies
- We can fabricate flare tips, straighten column trays and repair stationary equipment away from site
- All our welders receive in-house training and are independently qualified to 6G standard for P-GMAW, G-MAW, FCAW, SMAW and GTAW processes
- 3rd Party Certificate



Source: ANABEEB Photo Library
(Machine shop, carbon steel & stainless steel workshop at ANABEEB, Jubail 2)



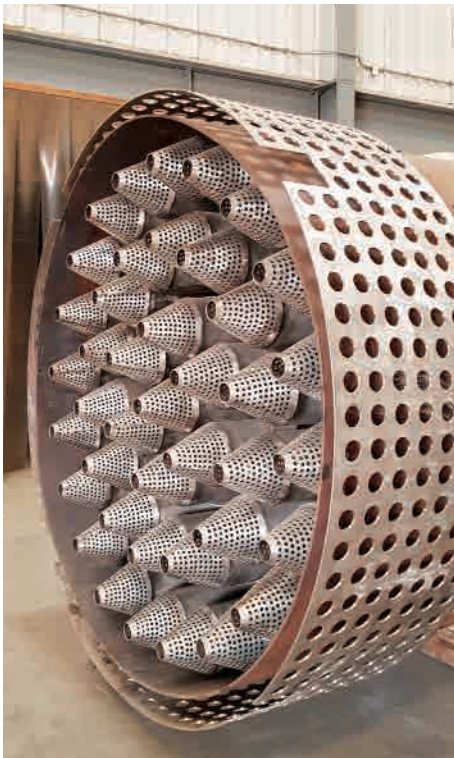
Flare and Chimney Manufacturing

Our manufacturing yard can produce and manufacture flare tip according to the requirements of the client

Our yard of +55,000m² clear space can handle huge amounts of activities such as structures and flare stacks & our team of welders are certified to weld any kinds of steel to manufacture pilot burners.

We can manufacture any flare systems

- Self Supported
- Guyed-Supported
- Derrick-Supported
- Enclosed Flare
- Multi-Point Flare System



Capabilities to Manufacture Regarding Heat Transfer Equipment

- Flare tip
- Igniters, pilot burners
- Structure

Our team is also qualified to do the installing of the systems at the site.

Source: ANABEEB Photo Library
(Flare Manufacturing at ANABEEB, Jubail 2)



Skids

Manufacturing at our facility will provide extra control over production time, quality control and easy access for optimization. We deliver and manage reassembly of your units on schedule.

Since most of our projects are completely customized, we give you full transparency to our process and development.



Exchanger

We have the capability, machine, and procedures to fabricate, modify and repair heat exchangers. We are certified under ASME and possess both the "U" and "R" stamps.

In the past, we have successfully completed full modification and repairs of heat exchanger bundles for ARAMCO and SABIC.

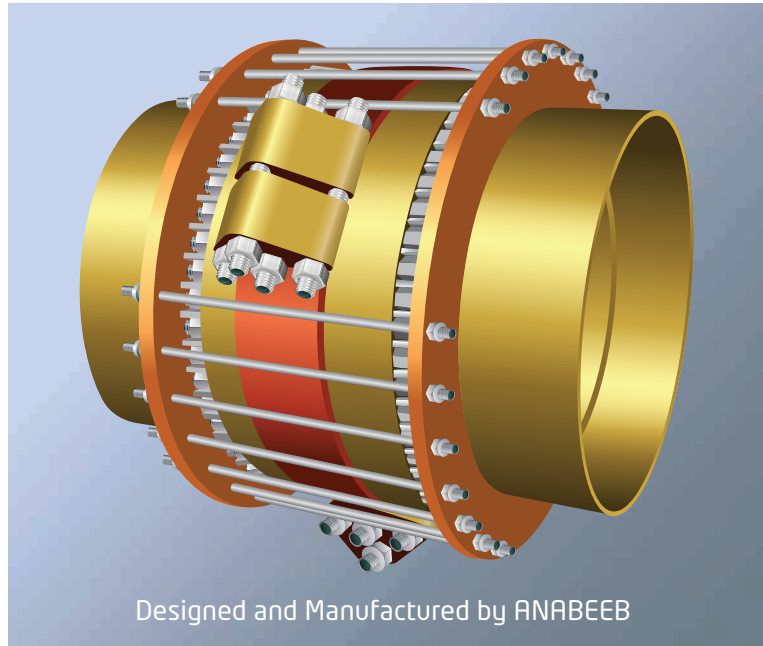
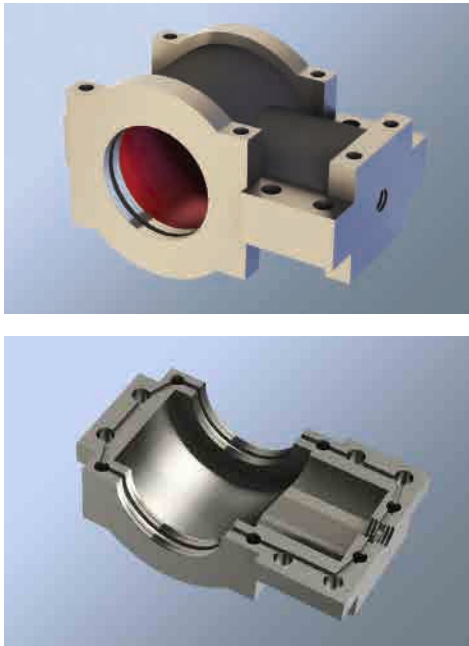


Source: ANABEEB Photo Library
(Manufacturing team building skids & heat exchanger at ANABEEB, Jubail 2)

Online leak sealing is used to seal various types of leaks, including leaks through packing glands, valve bonnets, pipe joints, tees and elbows.

Online leak sealing has proven to be effective on a wide array of pipeline, valve and pressure vessel leaks. The process is successful on steam, water,

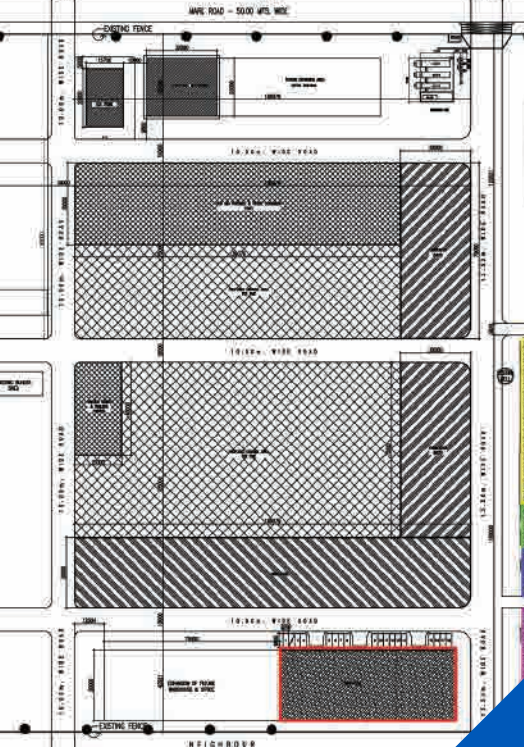
hydrocarbons, and on a wide range of chemical systems at pressures from a vacuum to 6000 psig and temperatures from cryogenic to 1000°C.



We can safely and efficiently seal leaks on flanges, pipelines, fittings and valves operating at cryogenic temperatures to 927°C, and at pressures ranging from vacuum to 414 bar, whilst online. In addition to repairing steam, water and air leaks we can also repair almost all hydrocarbon, chemical and gas leaks.

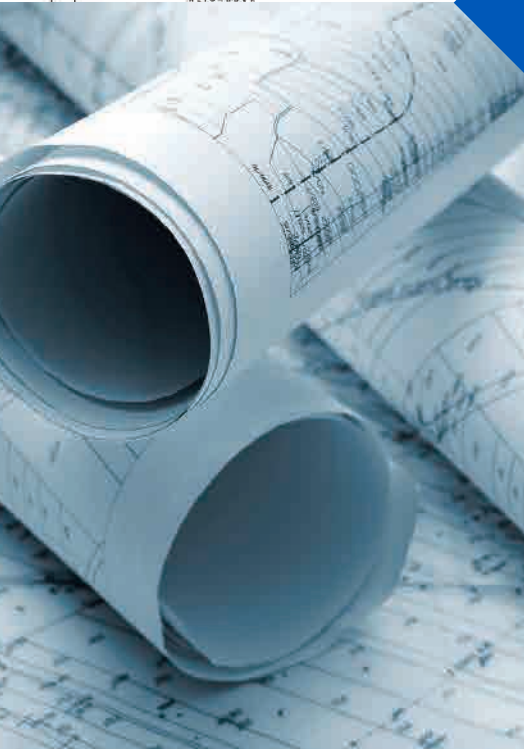
Online Leak Repair

- Valve packing drill & tap
- Flange clamp
- Tongue clamp
- Packing clamp
- Wire wrap repair
- Flat face flange repair
- Total flange enclosure
- Tee enclosure
- 90° Ell enclosure
- Total valve enclosure



On-site Maintenance Unit

Qualified, certified, trained and skillful manpower in various disciplines of projects and management.



Source: ANABEEB Photo Library
(Blueprint of ANABEEB office, Jubail 2)



On-site Maintenance Services

Plant Maintenance

ANABEEB have full time dedicated personnel for this service and task, our engineers are capable of covering most of the technical specialties, our team is accomplished of delivering projects at all stages, from start to finish.

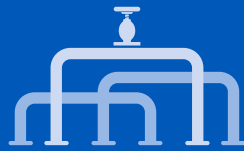
By stationing ANABEEB specialist maintenance teams continuously on site we are able to become a reliable and effective partner that can immediately solve your problems 24/7.

ANABEEB can deploy specialist teams and equipment to industrial facilities for short and long term periods under a blanket rate contract. This integrates our deep maintenance knowledge into a plant and allows our breadth of experience to be drawn upon by operators as-and-when required.









Pipeline Division

In 1983, Pipeline Division started the business by offering pipeline tunneling from a modest office in Kunaini Farms, Jubail.

The speed at which ANABEEB executes jobs has firmly impressed customers and end users, offering them an alternative to the traditional thrust boring methods, with a positive approach to customer needs and focus on excellence across our range of skills.

Source: ANABEEB Photo Library
(Thrust boring, microtunnelling & sheet piling at client site, K.S.A.)

Pipeline Construction & Thrust Boring Specialists

One of the most experienced quality assured pipeline and thrust boring specialists having all of the expertise and the most up-to-date equipment for precision completion of water, sewage, power, communication, and oil & gas pipeline projects. Our Pipeline Division offers a wide range of Trenchless Technology Services.



ANABEEB's thrust boring services include Horizontal Directional Drilling (HDD), Microtunnelling, and, Pipe Jacking. In addition to that, we offer all required ancillary works such as Dewatering and Sheet Piling.

ANABEEB is known for its non-intrusive project handling, avoiding interruption to traffic flow and greatly improving client value.

Source: ANABEEB Photo Library
(Pipeline thrust boring at client site, K.S.A.)

Thrust Boring Equipment

With diameters ranging from 20 inches to 78 inches for Micro Tunneling and up to 128 inches for Pipe Jacking, ANABEEB has successfully completed crossings up to 220 meters. Whether the ground is sand or rock, we have the machines for it.



Microtunnelling



Pipe Jacking

ANABEEB is in the forefront of HDD projects, in which we have achieved crossings of 1,700 m length and up to 48" diameter pipelines. These projects were a real milestone for ANABEEB and our clients.



HDD Maxi Rig



HDD Mini Rig

Source: ANABEEB Photo Library
(Pipeline activities at client site & ANABEEB Yard, Jubail 1, K.S.A.)

Pipeline Equipment

ANABEEB is currently offering Non-Metallic Pipe Wrapping, Sheet-Piling and Well Point Dewatering as separate services and not only as a part of our thrust boring works.



Sheet Piling

Specification / Capacity:
372 nos. 4.5 - 12 m



Non-Metallic Wrapping

Different types of anti-corrosion
protection



Dewatering

Specification / Capacity: 8 bar





Training & Development

Training Yard

Our unique and state-of-the-art training yard is spacious enough to contain around 250 trainees at a time. Replica of exchangers, confined space, line pipes, columns, mechanical fitting devices and reactor are lined up in the yard for a

realistic experience in training. Our employees molded here in their expertise and efficiency make ANABEEB the best industrial services company in the Middle East.



About TDD

- 116,138 individual training hours annually
- 12 full time & 25 part time trainers
- 45 in house courses specific to downstream sector
- Foundation training to prepare manpower for shutdowns & turnarounds
- Company wide Safety Awareness Team training for behavioural management
- Competency development programs for project leaders, supervisors and safety personnel
- Skill tests to determine quality of new manpower
- Certification of operators and technicians by third party
- Refreshment and scenario training to sharpen skills

Source: ANABEEB Photo Library
(ANABEEB Training Yard at Jubail 2)

Eastern KSA

📍 P.O. Box 234 Jubail 31951, Saudi Arabia
☎ +966 13 362 0556 📠 +966 13 361 4990

Qatar

📍 P.O. Box 491, Doha, Qatar
☎ +974 4450 3716 📠 +974 4450 3722

Kuwait

📍 PO Box 7718, Mangaf, Kuwait
☎ +965-22391600 📠 +965-2239 1600

Western KSA

📍 P.O. Box 30915 Yanbu, Saudi Arabia
☎ +966 13 362 0556 📠 +966 13 361 4990

UAE

📍 P.O. Box 46444 Abu Dhabi, UAE
☎ +971 2 692 8900 📠 +971 2 692 8987

Oman

📍 P.O. Box 4138 Al wattayah, Muscat, Oman
☎ +968 2 456 1946

✉ info@anabeeb.com 🌐 www.anabeeb.com